



FLATSCAN15[®]

THE BEST AND UNRIVALLED EOD MOBILE ICM'S SCANNER IS NOW AVAILABLE IN SMALL SIZE AND IS VERY LIGHTWEIGHT



ICM, the world's only manufacturer of both X-ray sources and images detectors, is proud to present to you our revolutionary FLATSCAN15

SMALL

- ▶ 3,5 KG
- ▶ 15" DIAGONAL ACTIVE AREA
- ▶ 40 MM THICK

FAST

- ▶ 5 SECONDS IMAGE CAPTURE
- ▶ DUAL ENERGY SINGLE CAPTURE
- ▶ 3" BOOTING TIME
- ▶ 1 CLICK POST PROCESS

ENHANCED FEATURES

- ▶ 500 IMAGES / CHARGE
- ▶ > 1000 HOURS BATTERY LIFE

SECURE

- ▶ NO RF EMISSION (OPTION)
- ▶ 1 APPROACH SYSTEM
- ▶ 3 EDGES - DEAD ZONE FREE

PERFORMANCES

Operating in conjunction with our Constant Potential X-ray sources **CP120B** or **CP160B** and their small focal spots, this innovative **FLATSCAN15** delivers you a sharp, clear and detailed image of any suspicious object that will help you to ensure immediate and accurate decision making.

ENHANCED BATTERIES

Being supplied with the very latest 'free of memory effect' Li-ion batteries, the **FLATSCAN15** can now be used for many hours and capture approximately 500 images before requiring a new charge or being temporarily replaced by another battery pack to enable immediate use.

For convenience and to avoid unexpected disruption, the **FLATSCAN15** software continuously displays the remaining battery charge of both the **FLATSCAN15** and CP X-ray source.

SMALL AND LIGHTWEIGHT

The **FLATSCAN15** size and weight provide bomb disposal squads with the most user-friendly X-ray imaging tool in terms of handling and transportation.

In combination with our **FLATSCAN30** and our process free films (PF), they are able to cover the majority of genuine cases that bomb squads face on a daily basis.

And this is achieved within just 3.5 kg of high-tech equipment. Designed both for and according to the requirements of investigation teams, the **FLATSCAN15** and our CP's X-ray sources offer the perfect portability and volume that is required, for example, by an inner car inspection.

INNOVATIVE SOFTWARE

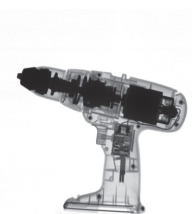
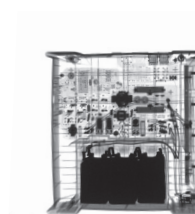
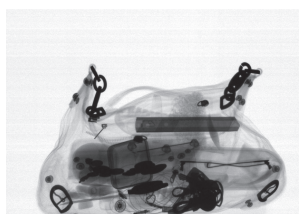
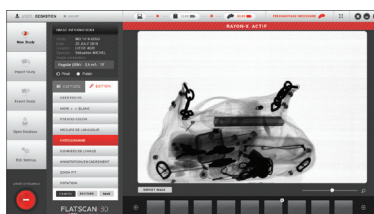
The **FLATSCAN15** is delivered with a multilingual interface that allows the operator to make and process images after only a few minutes of training.

This enhanced software features straightforward function buttons that initiate hidden complex image processing.

The thumbnails bar at the screen bottom is a particularly helpful tool with which operators can visualize the different images and their later processes made during the entire operation. Meanwhile, a database storage system lets you comment, store and retrieve or transfer images in a very intuitive way.

MATERIAL DISCRIMINATION

Optional hardware and software enable the **FLATSCAN15** to differentiate organic and inorganic materials in a SINGLE image capture.



FLATSCAN15[®] technical specifications :

FLATSCAN15

Sensor type	Linear photodiodes array
Resolution	40 AWG / 1.25 lp/mm
Pixel size	400 microns
Dynamic range (Grey levels)	14 bits (16,384 grey levels)
Active area	307 mm x 230 mm / 15.1 inches diagonal
Maximum penetration¹	25 mm of steel (guaranteed with CP120B) / 29 mm of steel (typical with CP120B) 30 mm of steel (guaranteed with CP160B) / 34 mm of steel (typical with CP160B)
Number of "covered sides"²	3 (Left, right and bottom)
Uncovered active area	5 mm (from bottom) / 7 mm (from sides)
Booting time	3 sec
Image acquisition time: min/max	5 seconds to 135 seconds
Battery life²	4 hours in standby mode / 500 images with one battery charge
External dimensions	376 mm (H) x 322 mm (W) x 40.5 mm (T)
Weight	3.5 Kg (single energy) – 3.8Kg (dual energy)
Operating temperature	-10 to +50 °C / +14 to +122 °F
Storage temperature	-10 °C to +65 °C / +14 to +158 °F
Communication protocols	Bluetooth / Wi-Fi 802.11n (cable optional for zero RF radiation)

CP120B & CP160B	CP120B	CP160B
Waveform	Constant potential	Constant potential
Maximum KV	120 KV (KV adj.: 40 to 120 KV)	160 KV (KV adj.: 40 to 160 KV)
Maximum mA	1.0 mA	0.5 mA
Exposure time	adjustable from 1 s. to 300 s.	adjustable from 1 s. to 300 s.
Pre-warming time	adjustable from 0 s. to 99 s.	adjustable from 0 s. to 99 s.
Focal spot sizes	0.8 x 0.5 mm ² / 0.031 x 0.019 in. ²	0.8 x 0.7 mm ² / 0.031 x 0.027 in. ²
Beam angle	50° x 50°	60° x 60°
Tube life	> 10 years of daily use	> 10 years of daily use
Leakage dose at 1m	1250 µSv/h	2000 µSv/h
1 battery (Li-Ion)	37 V 1400 mAh	37 V 1400 mAh
Max. capacity / 1 battery²	14 min cont. X-ray generation	14 min cont. X-ray generation
Charger type	Intelligent fast battery charger	Intelligent fast battery charger
Charging time	1h	1h
Weight (including battery)	7 kg / 15.3 lbs	9.2 kg / 20.1 lbs

Imaging Station (PC)

Type	Notebook LATITUDE E6520
Processor	Intel Core -i5-2520M (2.5GHz Dual-Core)
Screen	15.6" High Definition
Ram	4GB 1333MHz
HDD	320 GB - 7200 RPM

Carrying Cases Type

IP66 Hermetic case for X-Ray source & accessories	846 x 620 x 490 mm ³ / 33.3 x 24.5 x 19.3 in. ³
Backpack for detector daily use	400 x 350 x 60 mm ³ / 15.8 x 13.8 x 2.4 in. ³

Options

Wireless repeaters	
Spare batteries for the detector or X-ray source	50 m or 100 m Ethernet cable for zero RF emission
200 m fibre optical cable for zero RF emission	
Process Free Films (8"x10", 10"x12" or customized sizes)	30 m ON/OFF cable for the use of PE Films
Personal dosimeters	
Materials separation software	
Trippods and stands	
External camera	

Software Features

Pan, Zoom, Distances Measurement	
Reverse black and white	
Pseudo colour	
Deep focus	
Histogram	
Low battery alarm	
X-Ray source parameters adjustable (KV, mA and time)	
Materials discrimination (optional)	
EMBOSS	

¹ Distance between X-ray source and image cap. unit: 15 cm

² Approximately 5000 Images produced with one battery charge

#104A - All specifications are non contractual and subject to change without prior notice.

Zoning "Les Plennessees"
Rue du Progrès, 3
B-4821 Dison - Belgium

Tel: +32 (0) 87 / 440 150
Fax: +32 (0) 87 / 440 160
E-mail: sales@icmray.com

www.icmray.com/security